



RED HAT
OPEN SOURCE DAY

Europe, Middle East & Africa



AUTOMATION MADE SIMPLE WITH ANSIBLE TOWER

Alessandro Arrichiello

Solution Architect

aarrichi@redhat.com

Luca Villa

Solution Architect

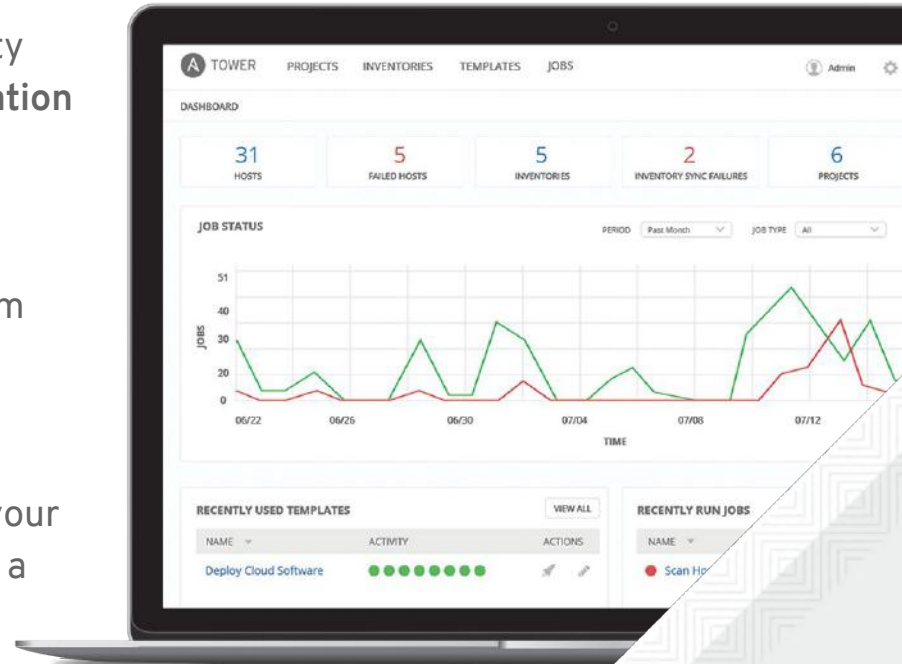
luca@redhat.com

WHAT IS ANSIBLE AUTOMATION?

The Ansible project is an open source community sponsored by Red Hat. It's also a **simple automation language** that perfectly describes IT application environments in **Ansible Playbooks**.

Ansible Engine is a **supported product** built from the Ansible community project.

Ansible Tower is an **enterprise framework** for controlling, securing, managing and extending your Ansible automation (community or engine) with a **UI and RESTful API**.





v1 - Set config file to use on boot

1. Write multiple configuration files
 - For each environment/region
2. Inspect metadata on boot and use the matching config file

v1 - Set config file to use on boot

1. Write multiple configuration files
 - For each environment/region
2. Inspect metadata on boot and use the matching config file



24,000+

Stars on GitHub

1250+

Ansible modules

400,000+

Downloads a month

THE ANSIBLE WAY

CROSS PLATFORM

Agentless support for all major OS variants, physical, virtual, cloud and network devices.

HUMAN READABLE

Perfectly describe and document every aspect of your application environment.

PERFECT DESCRIPTION OF APPLICATION

Every change can be made by Playbooks, ensuring everyone is on the same page.

VERSION CONTROLLED

Playbooks are plain-text. Treat them like code in your existing version control.

DYNAMIC INVENTORIES

Capture all the servers 100% of the time, regardless of infrastructure, location, etc.

ORCHESTRATION PLAYS WELL WITH

Every change can be made by Playbooks, ensuring everyone is on the same page.

WHY ANSIBLE?



SIMPLE

- Human readable automation
- No special coding skills needed
- Tasks executed in order
- Usable by every team
- Get productive quickly**



POWERFUL

- App deployment
- Configuration management
- Workflow orchestration
- Network automation
- Orchestrate the app lifecycle**



AGENTLESS

- Agentless architecture
- Uses OpenSSH & WinRM
- No agents to exploit or update
- Get started immediately
- More efficient & more secure**

ANSIBLE SHIPS WITH OVER 1250 MODULES

CLOUD

AWS
Azure
CenturyLink
CloudScale
Digital Ocean
Docker
Google
Linode
OpenStack
Rackspace
And more...

VIRT AND CONTAINER

Docker
VMware
RHEV
OpenStack
OpenShift
Atomic
CloudStack
And more...

WINDOWS

ACLs
Files
Commands
Packages
IIS
Regedits
Shell
Shares
Services
DSC
Users
Domains
And more...

NETWORK

Arista
A10
Cumulus
Big Switch
Cisco
Cumulus
Dell
F5
Juniper
Palo Alto
OpenSwitch
And more...

NOTIFY

HipChat
IRC
Jabber
Email
RocketChat
Sendgrid
Slack
Twilio
And more...

ANSIBLE AUTOMATION

NETWORK

Use Ansible to manage, validate, and continuously track heterogeneous network device configurations and deployments.

33+

Networking platforms

460+

Networking Modules

ansible.com/networking

WINDOWS

Use Ansible to deploy and manage Windows systems and applications.

70+

Windows Modules

350+

Powershell DSC resources

ansible.com/windows

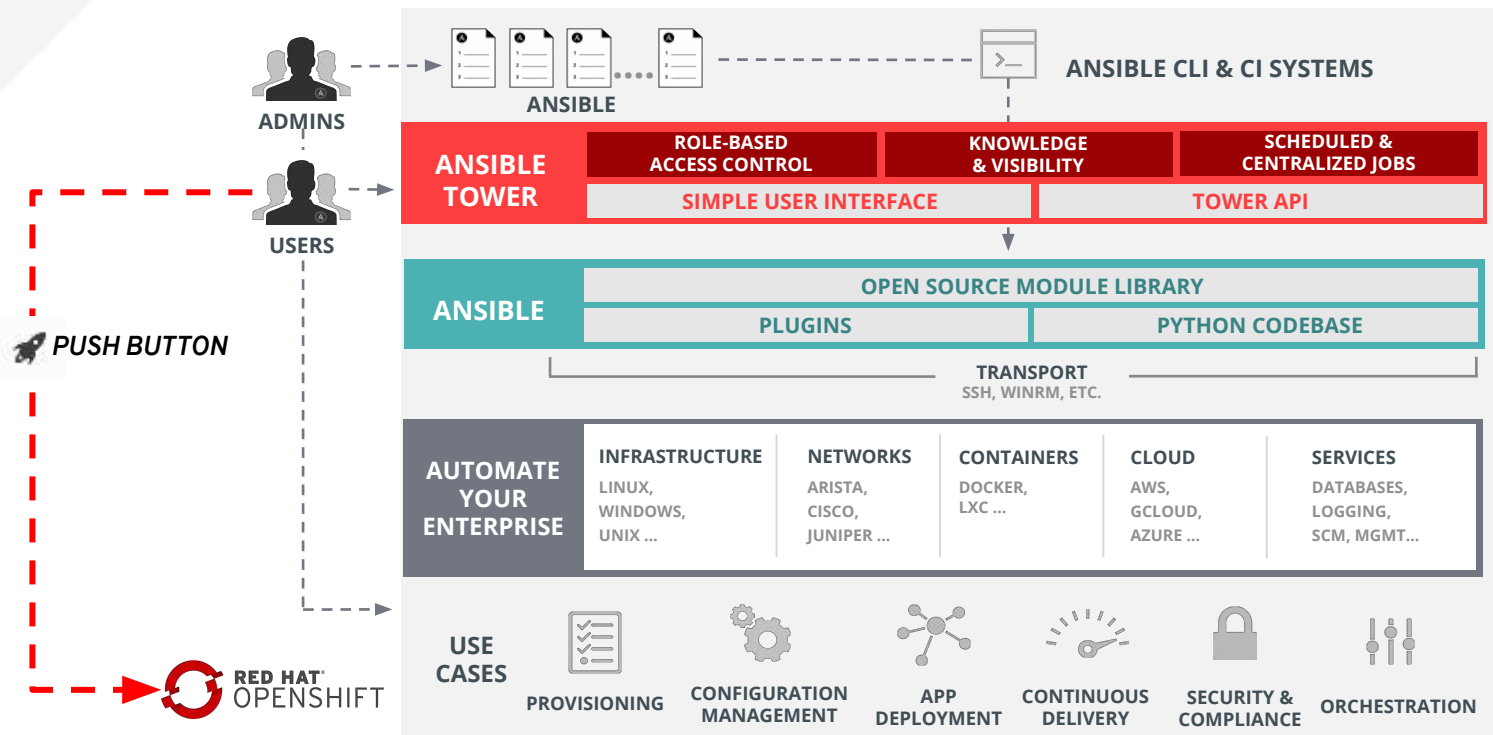
WHAT IS ANSIBLE TOWER?



Ansible Tower is an **enterprise framework** for controlling, securing and managing your Ansible automation – with a **UI and RESTful API**.

- **Role-based access control**
- **Deploy** entire applications with **push-button deployment access**
- All automations are **centrally logged**

FUNCTIONAL ARCHITECTURE



WHAT'S NEW IN TOWER 3.2

ISOLATED NODES

Deploy automation workloads into a DMZ, or other remote locations

ADVANCED INSIGHTS INTEGRATION

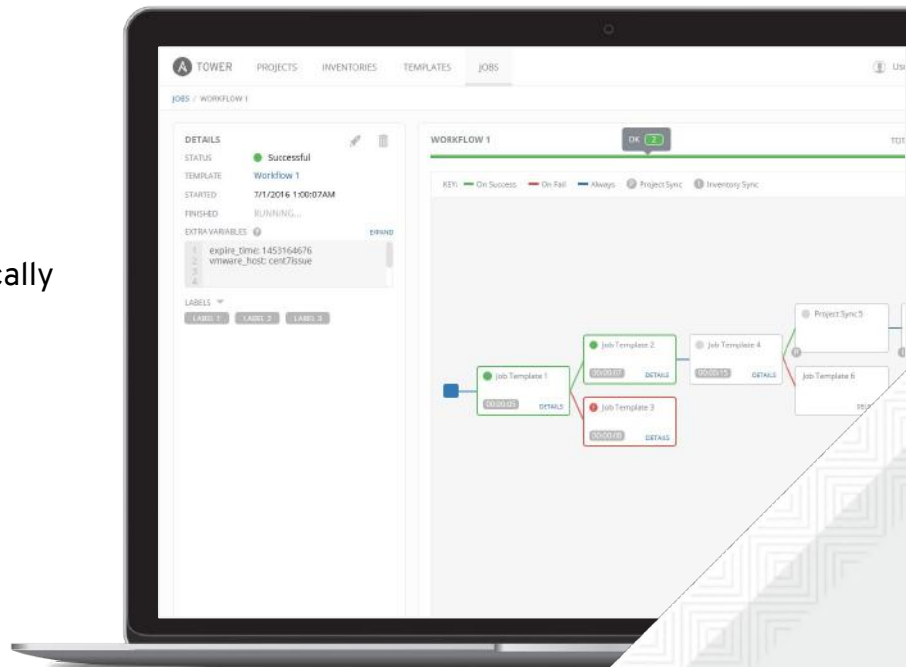
Directly view Red Hat Insights findings, and automatically remediate them

RESERVED EXECUTION CAPACITY

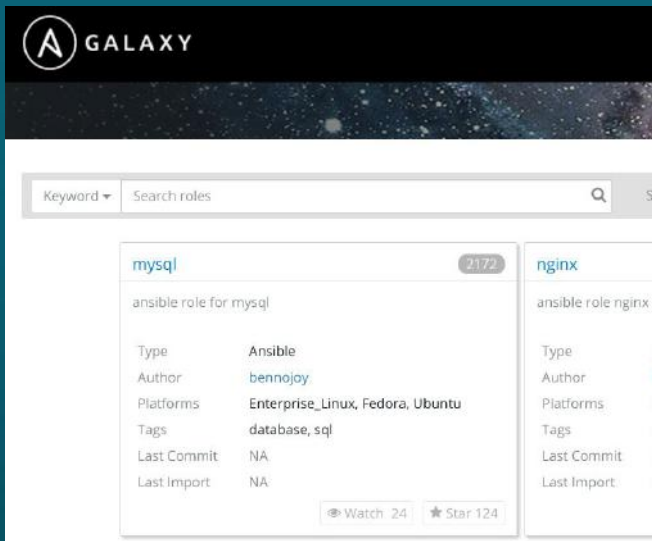
Limit job capacity available to certain user groups

SMART INVENTORY GROUPS

Customize and dynamically create groups of servers based on fact data



ANSIBLE GALAXY



- 10,000 ROLES AT YOUR DISPOSAL
- Re-usable Roles and Container Apps that allow you to do more, faster
- Built into the Ansible CLI and Tower
- galaxy.ansible.com

AUTOMATION = ACCELERATION



“**Simplicity scales.** If you do things in **complex ways**, they become very **difficult to maintain**, and you end up **paying a lot more for operations** later.”

J. CREW

“With Ansible Tower, **we just click a button and deploy to production in 5 minutes.** It used to take us 5 hours with 6 people sitting in a room, making sure we didn’t do anything wrong (and we usually still had errors). We now deploy to production every other day instead of every 2 weeks, and nobody has to be up at 4am making sure it was done right.”



“**Everyone in this room** needs to retool around Ansible automation. **All Starbucks network changes** will be scheduled **using Ansible Tower** by the end of 2017.”

ANSIBLE RESOURCES

Check out the Ansible website



<https://www.ansible.com/>
<https://galaxy.ansible.com/>